

Grifols Therapeutics

Biotechnology Facility

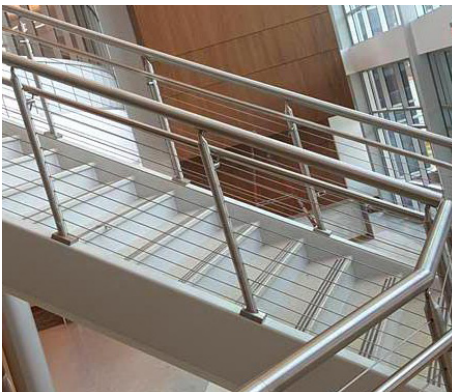


COMMERCIAL
PRODUCTS



Project Information

Project: Grifols Therapeutics, Inc.
Location: Clayton, NC
Architect: HagerSmith Design PA
GC: McCombs Steel
Completion: July 2017
Scope: Global healthcare company Grifols Therapeutics had outgrown its existing office space, and sought to consolidate all of its office workers into one facility. The resulting 115,000-square-foot building provided the healthcare giant with much-needed space, while also serving as a showpiece entrance to the company's Clayton, NC, campus. With its stainless steel cables, TCP's Casino Rail provides a clean, modern aesthetic that pairs well with the company's focus on healthcare research and biotechnology.



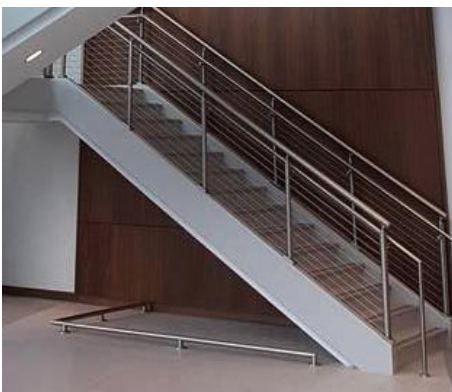
The focal point of the building's atrium is a three-story staircase featuring TCP's Casino Rail. The stainless steel system includes a 1.5" post-mounted handrail.



For added safety and security, double posts were installed at all breaks and corners.



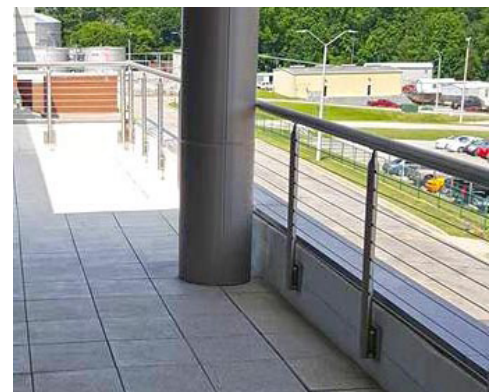
Post-mounted handrails are continuous from the staircase to landings, providing a seamless look.



Underneath the free-standing staircase, stainless steel rail offers an effective barrier for cane detection.



The clean, modern look of the interior railing is mirrored on the building's terrace.



Casino Rail offers a low-maintenance solution for high-traffic outdoor spaces. Posts were attached with a flat, rectangular plate and bolted to the mounting surface for stability.