



Texas A&M University - Tidal Hall

Higher Education

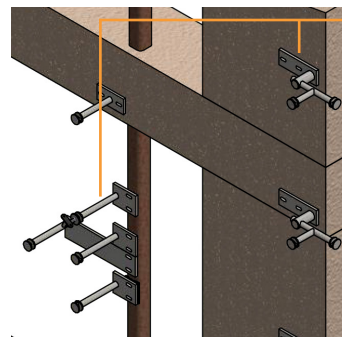
COMMERCIAL PRODUCTS



Photographer: Jeff Janko

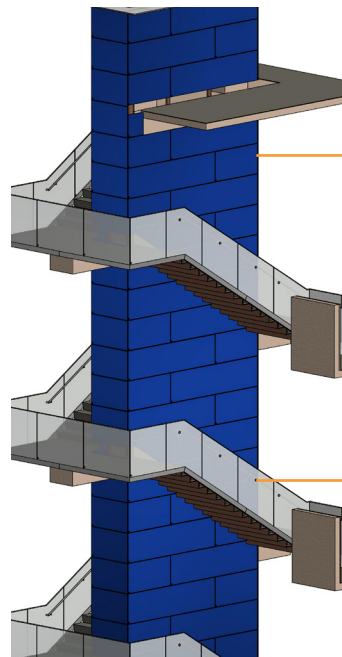
Project Information

Project: Texas A&M University - Tidal Hall Life Science Research Building
Location: Corpus Christi, TX
Architect: STANTEC
GC: Fulton Coastcon
Glazier: Haley-Greer, Inc.
Scope: The new Tidal Hall Life Science Research Building at Texas A&M University-Corpus Christi is the ideal setting for the university's growing ecology and marine biology departments. Trex Commercial Products engineered glass railings for the stairs and overlooks, employing sleek Track Rail with glass infill panels and stainless steel top cap. Custom brackets with multi-plane fastening locations were required for this demanding project to support a stunning, 2,000-square-foot, signature glass wall enclosure made with laminated velour etched blue glass.



Custom brackets for glass wall attachment to both concrete and steel tubes.

The exacting specifications of the glass panels required custom brackets that attached to multiple substrates, including both concrete columns and steel tubes, with just 1/8" of tolerance.



A 2,000-square-foot glass wall system in bright Artic Blue Velour Etch adds a striking design feature to the stairwell.

Glass: 1/4" Blue Glass, 0.060" PVB, 1/4" Blue Glass, W/ Velour Etch on Outside Surfaces

Track Rail featuring clear, tempered, laminated glass with PVB interlayer and polished exposed edges enhances the clean, modern aesthetic.